



# ERS LABS

## COMPANY PRESENTATION

[erslabs.com](http://erslabs.com) | [appnip.com](http://appnip.com)



**Contact:**

Mobile — +91 7795480369

Email — [info@erslabs.com](mailto:info@erslabs.com)

2nd floor, Solitaire building,  
Hi-tech City, Hyderabad,  
India. PIN — 500081



# Introduction

— Founded in 2015, developed by intellect software professionals, ERS' team is committed to solve real world problems

---



1. A platform that lets anyone build apps



2. Offers a bundle of high productivity features not available in the market



3. Tried and tested omnipotent use cases proven to save costs and revolutionize procedures



4. Multiple revenue lines aligned to growth of the business



# Market — High Productivity Application Platform (HPaPAAS)

— Enterprises today have high cost, long term solutions to adapt to changing requirements

## PROBLEMS FACED IN AN ENTERPRISE

1

Legacy ERP Systems not meeting new requirements

2

Disconnected systems, need for unified reporting

3

Need for integration with outside systems

4

Leverage new technologies Decision Tables, BPM, Analytics, AI, Big Data, Block Chain



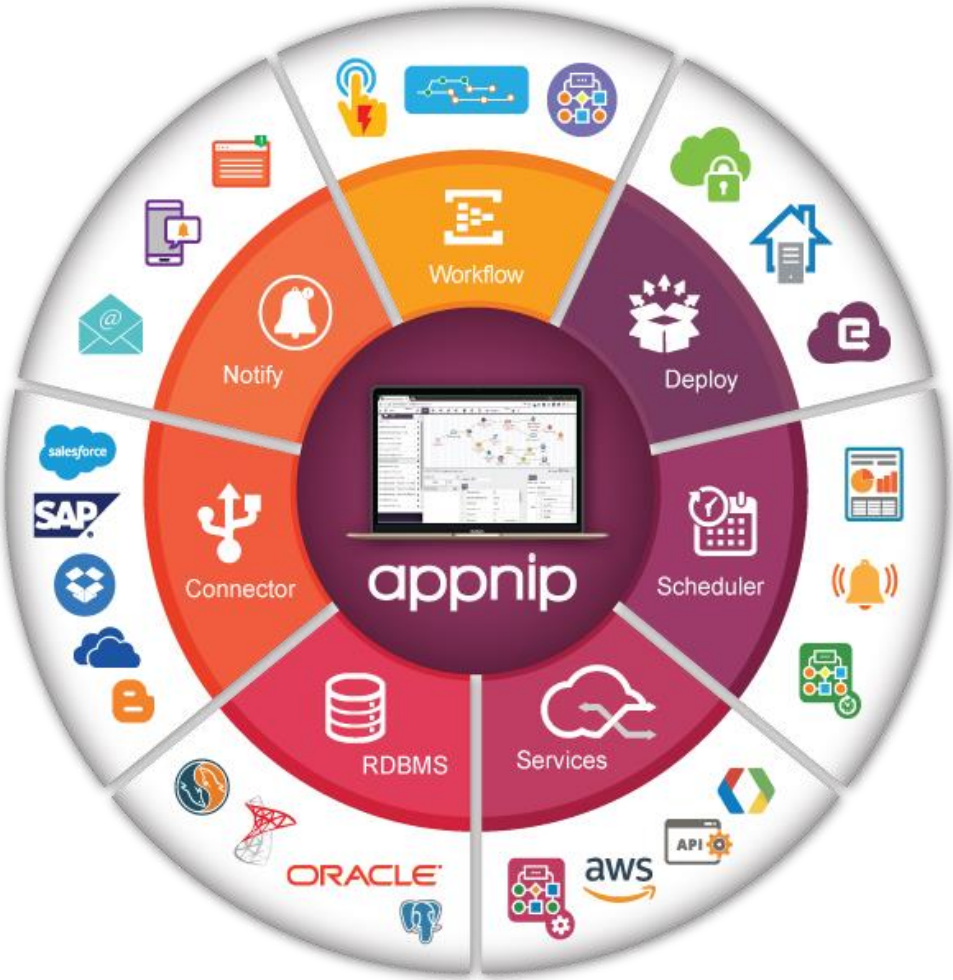
## HPaPAAS PLATFORMS IS THE WAY FORWARD

*High Productivity aPAAS platforms  
can be used by Enterprises to  
solve their integration needs and  
much more at a fraction of the  
cost charged by standalone  
integration products*



# About the product, appnip (1/2)

— A platform addressable to diverse verticals, offering omnipotent features with sustainable profits



## Highlights

- 1. Simple click and drag IDE <sup>(1)</sup>
- 2. Build beyond the scope of limitations
- 3. Architecture that adopts to changing technologies
- 4. Scalable across verticals
- 5. Long standing revenue lines, high recurrence rates and increasing marginal profitability

## Benefits

<b>60%</b>	<b>2x</b>	<b>0</b>	<b>80%</b>
savings in cost	customizability	Coding skills	time savings

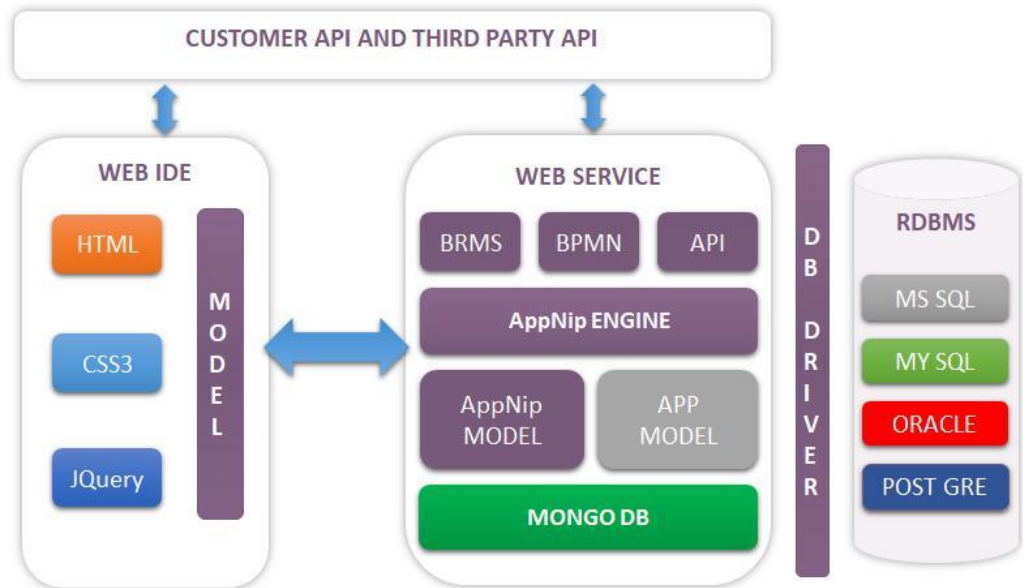
(1) IDE — Integrated Development Environment



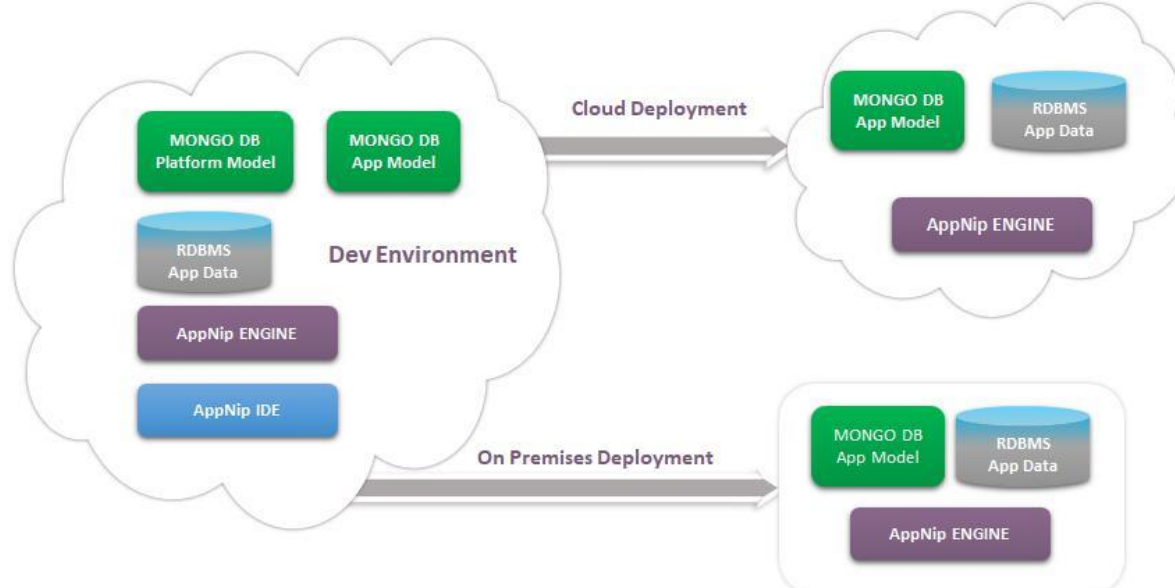
# About the product, appnip (2/2)

— Architecture that adopts quickly to changing technologies

## Platform Architecture



## Cloud Deployment Architecture



## Bundle of high productivity features in a nutshell



CLOUD PLATFORM



PROCESS FLOWS



MODEL BUILDER



MULTIPLE DATA SOURCES



WORKFLOWS



APP BUILDER



OUT OF THE BOX CONNECTORS

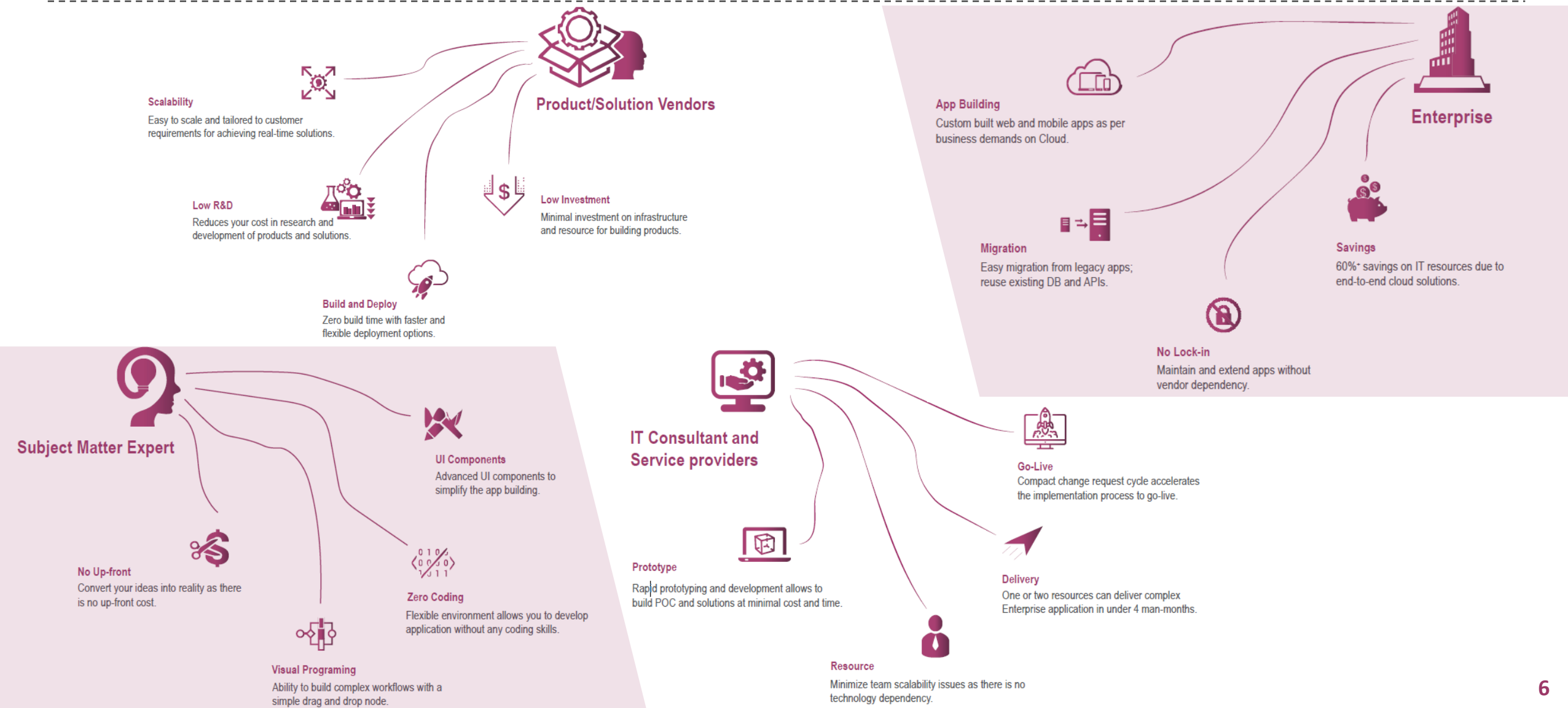


CLOUD PLATFORM CONNECTORS



# Target Customer Base

— Integrating with processes of ITeS providers, vendors, enterprises and subject matter experts

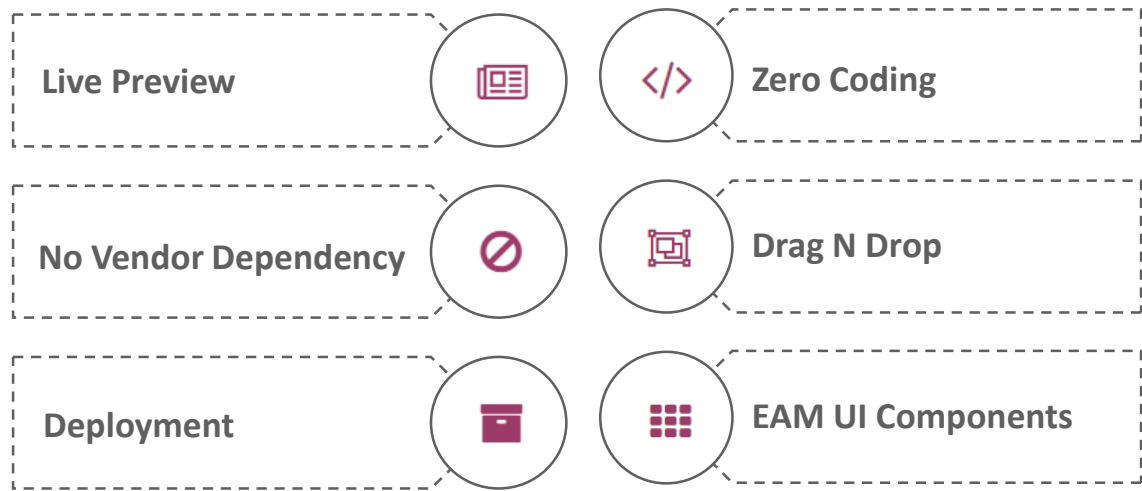




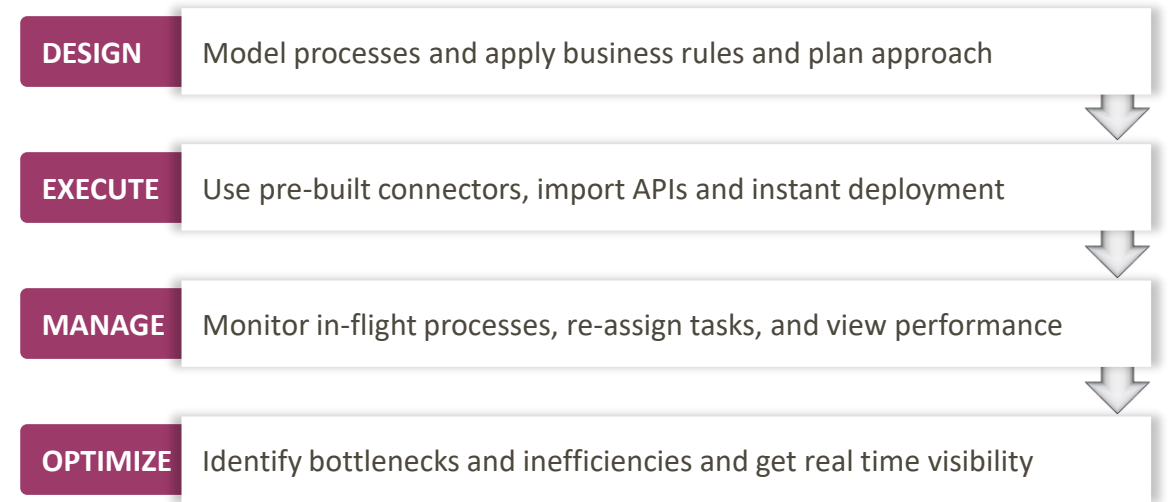
# Approach and accomplishments

— Build traction by aligning sponsor requirements in sequential phases

Bridging the gap between the sponsor requirements and solution provider



Users can now build apps in sequential phases as provided on the platform



## Accomplishments till date



TIMELINE





## Traction till date

— with successful pilot and positive pipeline, ERS is poised for growth

### EXISTING CUSTOMERS

**TRANSGRAPH**  
RESEARCH - CONSULTING - TECHNOLOGY  
commodity market mentors

  
**IGNITOR**

**bookcab**

### SUPPORTING PARTNERS

**clientCurve™**  
Defining Success Curve

**CA**  
RAJAN GUPTA &  
ASSOCIATES

### PIPELINE

**goibibo**  
.com

**mi** *hura*

**Bandhan**  
Bank

**SUNRISE**  
SOFTWARE DEVELOPMENT

**INTECH**  
INSTRUMENTS ANALYTICAL

**tg**

**terra greens**  
organic

**SUNTIARA SOFT**

**サンザイム**  
**Sanzyme**

**एसटीपीआई**  
**STPI**

**INDIA SOFT**



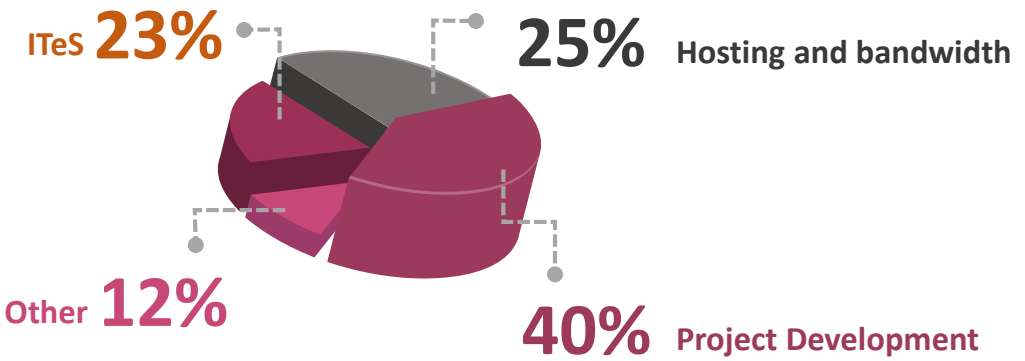
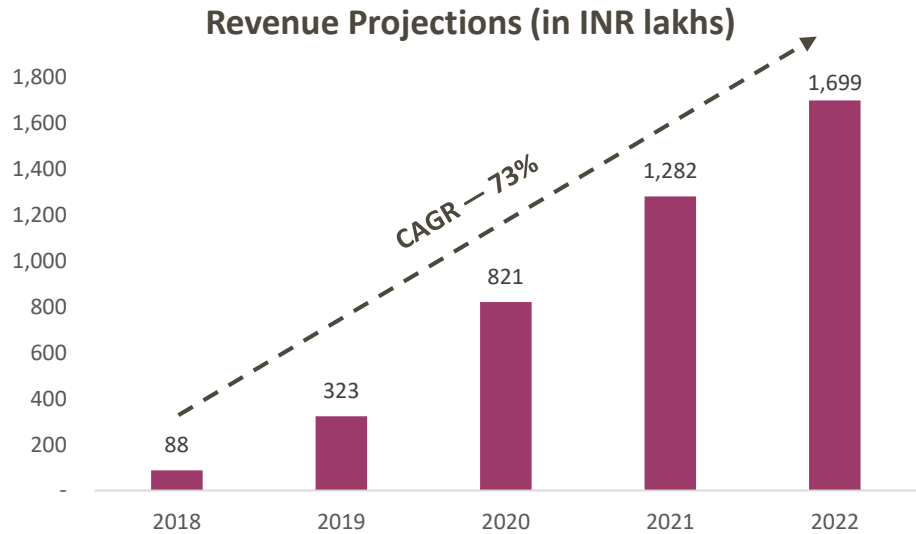


# Financial projections

— with ~55% net profit margin and 73% 5-year growth rate, ERS is expected to be profitable in the next 12 months

## 5-year growth plan

## Estimated Revenue (2018-2019)



## Use of funds — next 12 months

### CAPITAL EXPENDITURE



### MARKETING



### OTHER G&A



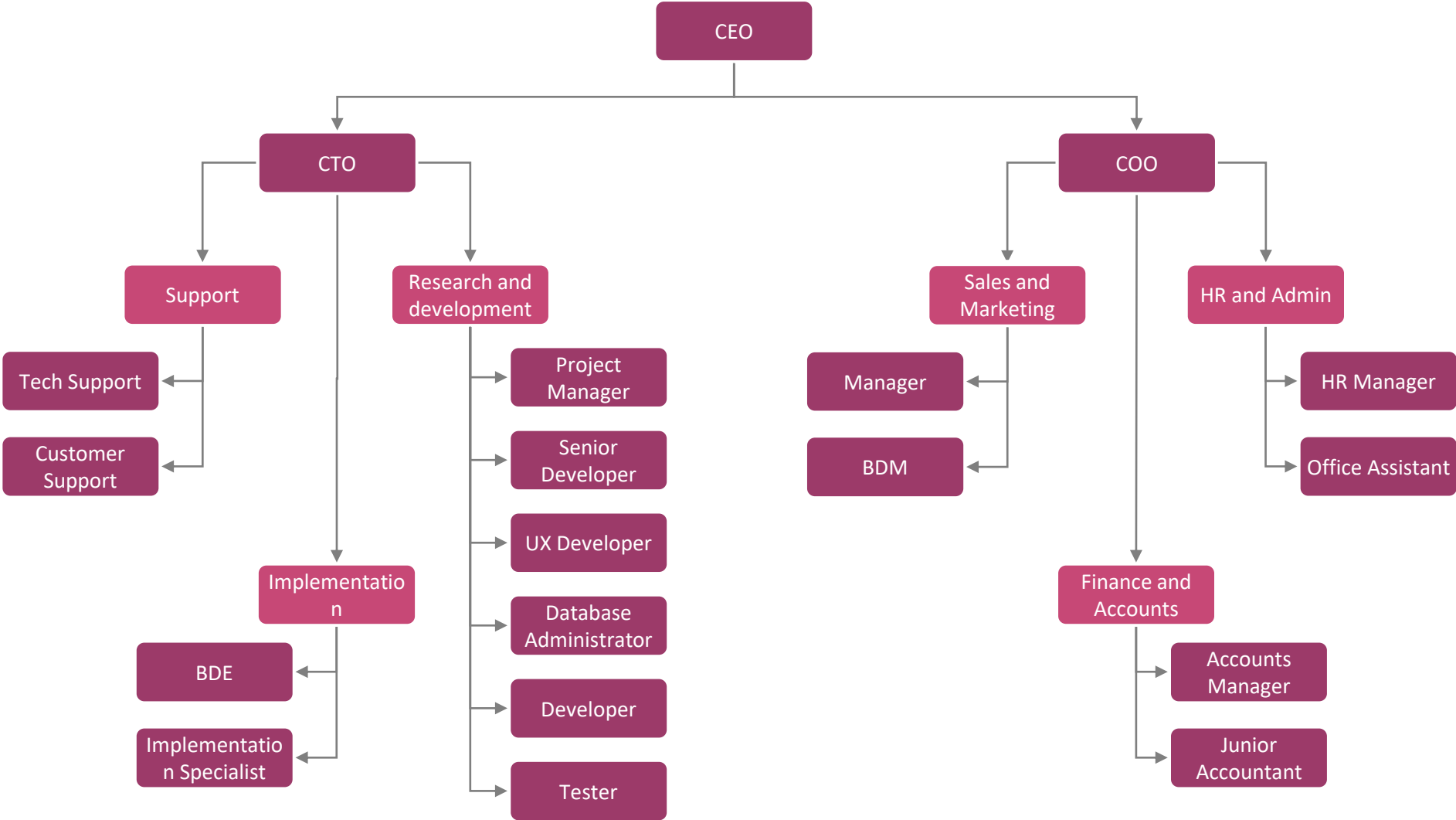
### WORKING CAPITAL





# Organization Structure

— proposed employee organogram for next 12 months





## Events and conferences

— our initial yet significant efforts towards getting seen

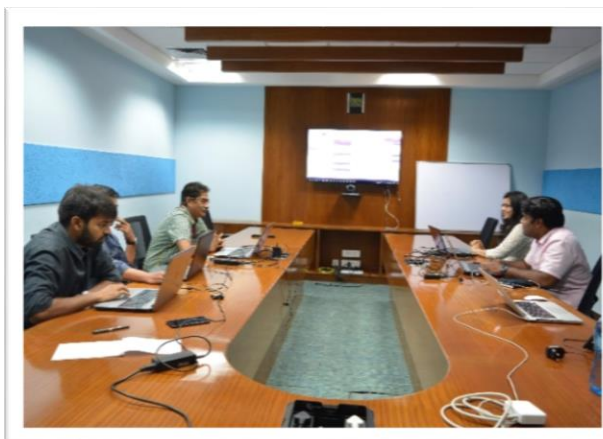
At India Soft — 2018 (Bangalore) and 2017 (Hyderabad)



ERS Labs turns 3!



In office appnip workshops



Hosting a pro bono workshop to empower students



## Core Team

— cumulative domain expertise of 50+ years

---



### **Mahipal Mettu, *Founder and CEO***

Mahi worked in several startups during an IT career spanning more than 15 years. His zeal for perfection and unwavering focus inspires many. Mahi's last engagement was with a School ERP company. During his experience at the job, Mahi realized the importance of putting the power of application development in the hands of the customer and hence embarked on his dream journey –to build a cloud platform that anyone can use for enterprise grade applications. After 3 years of perseverance we have the appnip platform that can turn conventional development philosophy head over heels.

---



### **Srinivas Reddy Annem, *co-founder and mentor***

An alumni of IIT Madras, class of 1996 and Co-founder of YASU technologies (1999), one of the first Rules Engine product companies from India. Srin, a basketball enthusiast and educationist, is an expert at devising solutions through prudent utilization of technology. He headed the US operations at YASU, working towards customer acquisition and customer engagement. Prior to YASU Srin worked at Infosys technologies and post YASU at SAP Labs. Srin is also the founder of Pragna Bharati school, located in Kurnool and is still actively associated with it. Srin's job at ERS Labs pertain to Product definition, Solution design & implementation, Customer Acquisition and Customer Engagement.

---



### **Neelima Bopanna, *co-founder and VP operations***

Neelima during her decade long career worked extensively with BPM, BRM and BAM technologies. This vested her with the power of such information tools that proved to be of utmost significance for the Company. She leads the technical implementation of MS Biztalk server at several enterprise customers. A unique combination of diligence and quick wit, her special expertise is valuable. A go getter, she brings to the table her single minded dedication in streamlining operations.



# Thank You



## CONTACT

Admin

+91 7795480369

[sales@erslabs.com](mailto:sales@erslabs.com)

